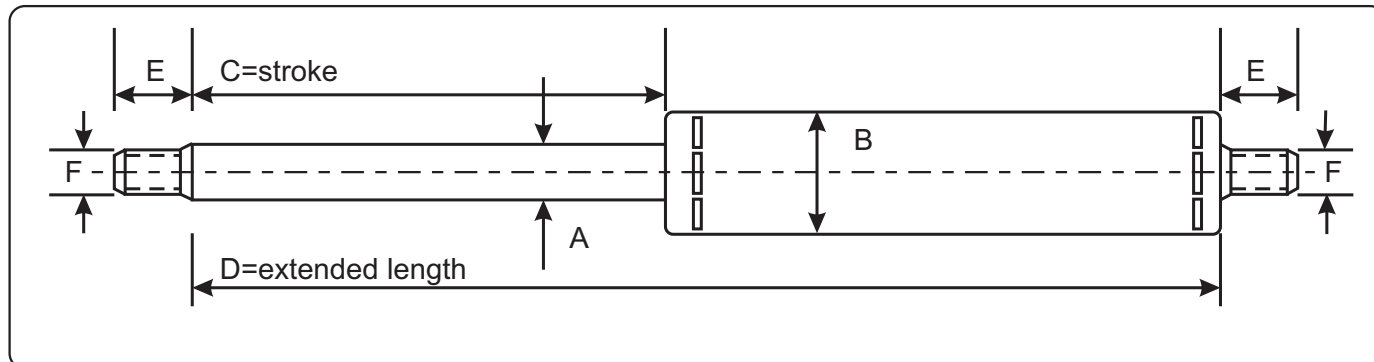


custom made gas push springs



part number	type	piston-rod A 1*	cylinder-tube B 1*	standard price till stroke C= 2*	F x E 3*	D = minimum 2xC + ... mm 4*	Deliverable Force F1 from/to 5*
999.001	6/15	6	15	150	M6x11	+ 50 mm	25-400 Newton
999.002	8/19	8	19	250	M8x11	+ 55 mm	100-750 Newton
999.003	10/23	10	23	500	M8x11	+ 55 mm	250-1000 Newton
999.004	10/28	10	28	500	M8x11	+ 55 mm	250-1000 Newton
999.008	12/25	12	25	500	M8x11	+ 55 mm	250-2000 Newton
999.005	14/28	14	28	500	M8x11	+ 55 mm	250-2500 Newton
999.011	14/30	14	30	500	M10x15	+ 55 mm	250-3300 Newton
999.013	14/40	14	40	500	M8/M14	+ 135 mm	250-2500 Newton
999.010	20/35	20	35	500	M14x15	+ 135 mm	250-5000 Newton
999.006	20/40	20	40	500	M14x15	+ 135 mm	250-5000 Newton
999.009	30/60	30	60	500	M14x20	+ 135 mm	500-10000 Newton
999.012	40/100	40	100	500	M16x20	+ 135 mm	500-17500 Newton

Price uplift per 50mm extra stroke length:

6/15 part.nr. 999051 - 8/19 999052 - 10/23 999053 - 10/28 999054 - 12/25 999055 - 14/28 999056
14/30 999.057 - 14/40 999058 - 20/35 999059 - 20/40 999060 - 30/60 999.061 - 40/100 999062

The piston rod is hard chromium plated and the cylinder tube is zinc plated.

1* Other combinations due to other force progressiveness are possible.

2* For greater stroke-lengths see our price uplift partnumbers

3* Other screwthreads are possible.

4* Other ratio, for instance, shorter stroke C and longer cylinder B are possible.

5* The stroke chosen (C) depends on the max. extendible force.

For fastening accessories see the applicable pages.