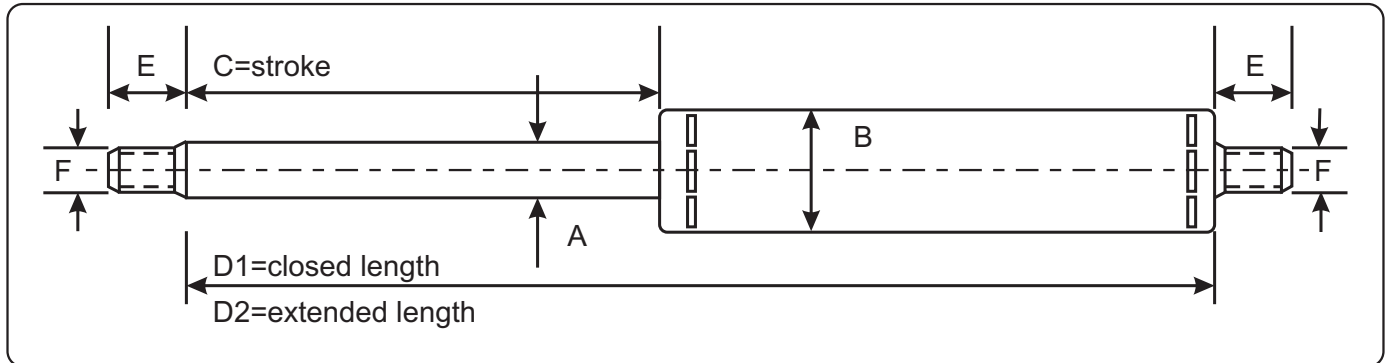


gas pull springs, custom made



part-number	type	piston-rod A	cylinder-tube B	standaard price up to stroke C=	F x E	D1 = minimum (closed length) C + ... mm	deliverable pullforce F1 from / to	
999.495	6/19	6	19	250mm	M6x11	+ 85 mm	50-750 Newton	
999.500	8/23**	8	23	500mm	M8x11	+ 85 mm	100-1000 Newton	
999.505	10/28**	10	28	500mm	M8x11	+ 85 mm	150-1750 Newton	
999.510	14/40**	14	40	1000mm	M10x15	+ 85 mm	250-4000 Newton	
999.513	20/60**	20	60	1000mm	M14x15	+ 162 mm	250-5500 Newton	
999.496	6/19	price uplift per 50 mm stroke						
999.501	8/23	price uplift per 50 mm stroke						
999.506	10/28	price uplift per 50 mm stroke						
999.511	14/40	price uplift per 50 mm stroke						
999.514	20/60	price uplift per 50 mm stroke						

The piston rod is hard chromium plated and the cylinder tube is zinc plated.

**These gas springs are provided with a valve so that afterwards the extendible force can be changed, as well as increased or decreased.

Gas-pull-springs must at all time be mounted with the piston rod pointing upwards.

The ventilation hole in the cylinder tube must remain open !!

F1 = the extendible force measured at 5 mm inward piston rod.

For fastening accessories see the applicable pages.