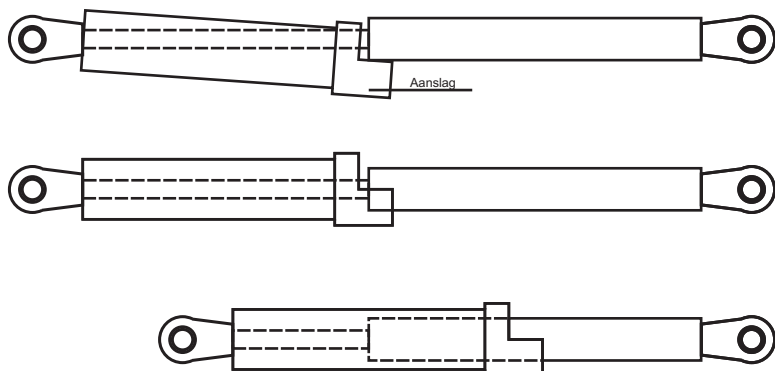


Safety / protection tubes

stainless steel



These safety / protection tubes offer protection against unintentional closing of hatches / covers and protects the piston rods from damaging. Are complete stainless and therefore Usable with stainless steel gas push and pull springs.

Not to be used in combination with welded eyes.

At the extending of the spring, the Tube snaps sideways and blocks

The ingoing stroke. After pushing the stop against the cylindertube, the spring can be pressed in again. Please notice that the length of the springs differ by using safety / protection tubes. See the tabel underneath. For the second spring an extension piece is added.

These safety / protection tubes can also be used with existing springs. Only 1 safetytube is to be used in every construction. On the other spring a simmellary looking protection tube should be used.

Unless otherwise prescribed, the fastening accessories will be mounted square at the end of the safety tube.

Safetytube for type:		manufacturer		partnumber incl. extensionpart	additional protectiontube	additional length
pushsprings	pullsprings					
6/15		Airax	T.Technics	601.100	601.101	43 mm
	6/18-19		T.Technics	601.105	601.106	43 mm
8/19-20-M8			T.Technics	601.110	601.111	43 mm
8/20-M6		Airax		601.120	601.121	43 mm
10/22-23	8/23	Airax	T.Technics	601.125	601.126	43 mm
12/25			T.Technics	601.130	601.131	50 mm
14/28	10/28	Airax	T.Technics	601.135	601.136	50 mm
20/40-42	14/40-42		T.Technics	601.140	601.141	50 mm